

# ASBESTOS DEMOLITION SURVEY REPORT

Of

Edmund Rice Schools Trust

Meadow Vale

Clonkeen Road

Blackrock

On behalf of

CS Consulting Group

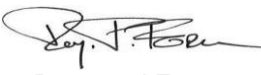

Unit 2BeaT Centre,  
Stephenstown Industrial Estate,  
Balbriggan, Co. Dublin  
Tel: (01) 6905907  
Fax: (01) 8020439  
Email: [info@ohss.ie](mailto:info@ohss.ie)  
Website: [www.ohss.ie](http://www.ohss.ie)



Project Number  
**27081**

# DOCUMENT CONTROL

<b>Client</b>	CS Consulting Group
<b>Project Title</b>	27081 Edmund Rice Schools Trust
<b>Document Title</b>	Asbestos Demolition Report
<b>Report No.</b>	27081

Rev	Status	Author(s)	Revision History	Approved By	Issue Date
D01	Final	 Raymond Foran	Initial Release to Client	 Paul Foran	31/05/19

## Contents

1. Executive summary
2. Scope of the project
3. General site and survey information
4. Conclusions and actions
5. Survey results

## 1 EXECUTIVE SUMMARY

OHSS carried out an asbestos survey to HSG264 requirements for the purposes of identifying asbestos containing materials in the premises(s) prior to planned demolition. It should be noted that this survey only includes areas within the scope of the survey and should not be read as an extensive assessment of all possible asbestos containing materials (ACMs) in the premises.

The findings of this survey are contained within the summary tables and risk assessment in the results section of this report.

Asbestos was found to be present in the following form:

### **Vinyl floor tiles:**

- Asbestos was found to be present within the floor tiles located within the store under the stairs on the ground floor.

It must be noted that due to the building been occupied at the time of the survey limited intrusive access was obtained. Prior to demolition works commencing full unrestricted access should be afforded to the surveyor to corroborate the findings of this survey report.

The survey undertaken complies with the company's legal duty to identify the presence of asbestos containing materials and carryout a risk assessment in respect of these materials at the premises. The risk assessment will form part of the overall safety management system for the contractor carrying out any asbestos removal works. The results of the risk assessment must be communicated to the employees and made available to them. This report may be used by the Project Supervisor for Design Process and the designers to highlight the presence of asbestos containing materials found in the buildings.

**While every effort has been taken to ensure the accuracy of this report OHSS do not accept responsibility for any omissions or areas of the building not addressed in the report. This report is intended to assist in reducing the possibility of accidents and ill health by bringing to the client's attention identified asbestos containing materials. Within the constraints of time and resources every effort has been made to identify ACM's. It is not implied that all other hazards are under control at the time of inspections.**

**THIS REPORT SHOULD BE READ IN ITS ENTIRETY AND SHALL NOT BE REPRODUCED EXCEPT IN FULL WITHOUT THE APPROVAL OF OHSS AND THE CLIENT.**

Questions arising from the survey report should be directed, in the first instance, to the author of this report, who will clarify any technical issues raised.

Further information on previous surveys should be sought from the client.

### 1.1.1 ABBREVIATIONS

Throughout the report the following terms and abbreviations may be used:

ACM	Asbestos containing material.
AND	Asbestos not detected.
MMMF	This describes any machine made mineral fibre, fibreglass, Rockwool, ceramic fibres and other such material.
MA	Material Assessment Score as defined in HSG264 relates to the friability of the product. It is used to indicate the level of risk posed by the product
AIB	Asbestos Insulating Board.
AC	Asbestos Cement
Chrysotile	Commonly known as white asbestos.
Amosite	Commonly known as brown asbestos.
Crocidolite	Commonly known as blue asbestos.
Amphibole	Generic name for all asbestos types, excluding Chrysotile.
BOHS	British Occupational Hygiene Society
INAB	Irish National Accreditation Board

## 2 SCOPE OF WORK

### 2.1 GENERAL

The scope of the survey included;

OHSS were requested to undertake an asbestos survey of the building prior to demolition works commencing.

The purpose of the survey is to identify, and risk assess asbestos containing materials (ACM's) in the premises or area where planned demolition works are to take place. The survey aims to provide sufficient information for designers and the project supervisor for design process to take account of identified asbestos risks. The design team must take account of known locations where ACM's are identified and plan to eliminate the risk or prevent exposure to asbestos during the construction phase. Asbestos is a particular risk within the definitions of "particular risk" in the Safety Health and Welfare at Work (Constructions) Regulations 2013 and should be highlighted in the design risk assessments accompanying the Preliminary Safety and Health Plan.

The surveyor undertook as far as reasonably practicable to, record the location, extent and product type of any presumed or known ACMs. All areas identified in the survey were inspected and the information recorded on the accessibility, condition and surface treatment of any presumed or known ACMs. The asbestos type was identified either by collecting representative samples of suspect materials for laboratory identification, or by making a presumption based on the product type and its appearance.

### 2.2 BUILDING DETAILS AND CONSTRUCTION TYPE

The building surveyed is a two-storey detached structure currently used as an office building. The building has concrete floors with masonry external walls. The internal walls are of both masonry and stud partition construction. The roof is pitched with a concrete roof tile finish.

### 3 GENERAL SITE AND SURVEY INFORMATION

**Client Details:** CS Consulting Group

**Client Address:** CS Consulting Group  
45 O'Connell Street  
Limerick

**Site Address:** Edmund Rice Schools Trust  
Meadow Vale  
Clonkeen Road  
Blackrock  
County Dublin

**Commissioned By:** Owen Sullivan

**Surveyor:** Raymond Foran

**Staff Consulted during the survey** Owen Sullivan

**Date of Survey:** 17<sup>th</sup> May 2019

**Date of Report:** 31<sup>st</sup> May 2019

**Description of the Areas Surveyed:** All accessible areas within the scope of the survey.

The following areas were not accessed;

**Excluded Areas:** All areas outside the scope of the project. All live plant and electrical equipment. All areas below ground. All areas above 3m in height. All areas beneath fixed floor coverings. All areas as identified within the results section of this document. It must be noted that due to the building been occupied at the time of the survey limited intrusive access was obtained. Prior to demolition works commencing full unrestricted access should be afforded to



the surveyor to corroborate the findings of this survey report.

### **Survey Methodology:**

On-site inspection bulk sampling and risk assessment were conducted in accordance with OHSS documented in-house work instructions.

Analysis of asbestos fibres in bulk materials is carried out at the OHSS laboratory. OHSS is accredited to INAB and meet the requirements of International Standard BS EN ISO/IEC 17025 for the analysis of asbestos fibres in bulk materials.

The surveyor conducted a systematic inspection of the nominated areas. Where access for sampling purposes was not possible, a visual assessment has been made if possible. For similar/repetitive elements, a representative bulk sampling protocol has been adopted following visual examination and assessment.

Bulk Samples are obtained using fibre suppression techniques in order to minimise respirable fibre release. Each sample was double bagged, uniquely labelled on site and then returned to the laboratory for analysis using plane and polarised light microscopy and dispersion staining techniques as defined in UK HSE Guidelines HSG248 and the OHSS documented in-house work instructions.

The results of the survey together with the laboratory bulk sample analysis records are given in further sections to this report.

The Safety Health and Welfare at Work (Exposure to Asbestos) Regulations 2006-2010 allows materials to be 'presumed' to contain asbestos. Therefore in the asbestos survey, materials can be presumed to contain asbestos.

There are two levels of 'presumption':

- **Strongly presumed:** in this case the material looks as if it is an ACM, or that it might contain asbestos. This

conclusion can be reached through visual inspection alone by an experienced, well-trained surveyor, familiar with the range of asbestos products. Examples of 'strong presumption' are:

- where laboratory analysis has confirmed the presence of asbestos in a similar construction material;
  - materials in which asbestos is known to have been commonly used in the manufactured product at the time of installation (eg corrugated cement roof and wall sheeting, cement gutters and drainpipes, cement water tanks, ceiling tiles, insulating boards);
  - materials which have the appearance of asbestos but no sample has been taken, eg thermal insulation on a pipe where fibres are clearly visible
  - where the laboratory has sampled the same material in a different location and subsequent laboratory analysis has found that it does not contain asbestos.
- 
- **Presumed:** is the 'default' situation where a material is **presumed** to contain asbestos because there is insufficient evidence (eg no analysis) to confirm that it is asbestos free, or where a surveyor decides that it is easier under the planned management arrangements to presume certain materials contain asbestos. Many non-asbestos materials will also be presumed to contain asbestos using this system.

There is a further default situation where materials must be **presumed** to contain asbestos. **The default applies to areas which cannot be accessed or inspected. In this situation any area not accessed or inspected must be presumed to contain asbestos, unless there is strong evidence that it does not.**

The risk assessment process (also known as risk algorithms) designed by HSE, allow asbestos containing materials to be ranked according to a Material Assessment algorithm and a HSE have related the scores obtained in the materials assessment algorithms in HSG 264 to a number of risk categories that may be used to guide the employers as to the best course of action to take to mitigate the risk. These are further explained in our risk assessment sheets contained within this report.

These scores can then be ranked and so decisions can be taken as to what actions are required to control the risks from asbestos containing materials during demolition.

## 4 CONCLUSIONS AND ACTIONS

Where asbestos containing materials were identified in the survey recommendations are provided in the asbestos register and risk assessments. A further explanation of the terms used in the management of asbestos containing materials risks are given below.

Asbestos is a known human carcinogen (cancer causing agent) that was used extensively in Ireland up to 2000 when it was finally banned from use. Asbestos fibres may cause fatal lung disease when inhaled. These diseases are not sudden and may take many years to develop from the first exposures. **Asbestos containing materials constitute a particular risk within the meaning of the Safety Health and Welfare at Work (Construction) Regulations 2006-2013 and should be addressed in the Preliminary Health and Safety Plan by the designers and the Project Supervisor Design Process.**

Asbestos is a fibrous material and has excellent insulating and fire resistant properties. Asbestos was seldom used as pure asbestos fibres but rather combined with other products to add strength and stability or fire resistance to them. Asbestos may be found in products from a few percent up to 90% depending on the type of material.

Asbestos is a hazard to humans but the risks posed by asbestos containing materials (ACM) will depend on the type of ACM found. In simple terms where asbestos products are flaky and would crumble under hand pressure quite easily they are termed friable. The more friable the ACM the more risk there is to the individual handling the material. This is reflected in the material assessment scores in the risk assessments

**No person is permitted to work with asbestos containing materials unless they have received training and have taken all reasonable steps to prevent exposure to asbestos. The requirement for training is detailed in Regulation 17 of the Safety Health and Welfare at Work (Exposure to Asbestos) Regulations, 2006-2010.**

## 4.1 DEMOLITION OPTIONS

ACM are found in many industrial buildings, hospitals, schools and homes. These materials were installed before 2000 with the peak period for installation occurring from the 1970's to the late 1980's. ACM's installed some 20-30 years ago will vary in condition depending on the type of product and the use of that product. The Safety health and Welfare at Work (Exposure to Asbestos) Regulations 2006-2010 requires a managed approach to asbestos containing materials in workplaces. These regulations require employers to identify the presence of asbestos containing materials and to assess the risk posed to workers by these ACM's based on the likely work activities and the potential for these work activities to disturb ACM's.

The outcome of these risk assessments are as follows;

### 1. Environmental clean

Where there is debris from the installed ACM's in the surrounding area it may be recommended that this material is removed by environmentally cleaning the area around the materials. Following removal of the asbestos containing materials a site clearance for re-occupation certificate must be obtained from a competent independent analyst prior to demolition of the structure in accordance with **Regulation 15 (10) of the Safety Health and Welfare at Work (Exposure to Asbestos) Regulations 2006-2010.**

### 2. Remove

Prior to demolition of the building or structure asbestos containing materials must be removed and disposed of by a competent contractor. ACM removal will form part of a construction project and will require careful coordination to be carried out safely. Following removal of the asbestos containing materials a site clearance for re-occupation certificate must be obtained from a competent independent analyst prior to demolition of the structure in accordance with **Regulation 15 (10) of the Safety Health and Welfare at Work (Exposure to Asbestos) Regulations 2006-2010.**

## 4.2 MATERIALS ASSESSMENT SCORING

### 4.2.1 ASBESTOS RISK ASSESSMENT

Employers are required under the Safety Health and Welfare at Work (Exposure to Asbestos) Regulations 2006-2010 to perform a risk assessment whenever they identify asbestos containing materials within the working environment. The risk posed by asbestos is determined by the current and potential level of employee exposure to asbestos fibres. The following parameters are used in developing a risk assessment for asbestos containing materials;

### 4.2.2 ASBESTOS TYPE

There are six regulated types of asbestos. The common names associated with some of the asbestos types are shown in brackets below;

- Crocidolite (Blue Asbestos)
- Amosite (Brown Asbestos)
- Actinolite
- Anthophyllite
- Tremolite
- Chrysotile (White Asbestos)

International studies have identified that they have different potential to cause harm. Crocidolite is the most dangerous and Chysotile the least.

### 4.2.3 SURFACE TREATMENT

Surface treatment is a term used to describe how the fibres in the material are protected from release. The safest materials are composites such as cement and plastic where the fibres are contained within a material within a strong matrix. At the other end of the scale are materials that damage easily and have no protective coating such as sprayed asbestos and boiler lagging.

### 4.2.4 FRIABILITY

Products that damage easily such as sprayed asbestos are clearly more likely to release fibres than strong materials such as cement. This 'likelihood of fibre release' or crumbliness is commonly referred to as friability. Materials with high friability (such as insulation) are higher risk than those with low friability (such as vinyl floor tiles).

### 4.2.5 CONDITION

Products which are damaged are more likely to release fibres than those in good condition and are ranked according to the extent of damage observed.

## 4.3 CALCULATING RISK ASSESSMENTS

The Health and Safety Executive developed a risk assessment process within HSG264 which takes these four factors into account and attributes values to each of the factors allowing you to calculate a material risk assessment.

### 4.3.1 MATERIAL ASSESSMENT ALGORITHM

The material assessment algorithm is commonly used by most surveying organisations to give an indication of how dangerous a material is. Each of the four risk factors (friability, condition, surface treatment and asbestos type) are attributed a score of between 0 and 3 (see below). These scores are accumulated to give a risk score of between 0 and 12 (where 12 is the highest risk).

Project Number: 27081

When using this algorithm it is commonly accepted that materials can be divided into the following risk groups;

<b>Material Risk Rating</b>	<b>Description</b>
10-12	High risk
7-9	Medium risk
5-6	Low risk
2-4	Very low risk

These are colour coded within our risk assessment as outlined above.



4.3.2 HSG264 MATERIAL ASSESSMENT TABLE

<b>Sample Variable</b>	<b>Score</b>	<b>Example of Score</b>
Product type (or debris from product)	1	Asbestos reinforced composites (Plastics, resins, mastics, roofing felts, vinyl floor tiles, semi-rigid paints or decorative finishes, asbestos cement etc)
	2	Asbestos insulation board, mill boards, other low density boards, asbestos textiles, gaskets, ropes and woven textiles, asbestos paper and felt
	3	Thermal insulation (pipe and boiler lagging), Sprayed Asbestos, loose asbestos, asbestos mattresses and packing
Extent of damage / deterioration	0	Good condition: no visible damage
	1	Low Damage: a few scratches or surface marks; broken edges on boards, tiles etc
	2	Medium damage; significant breakage of materials or several small areas where material has been damaged revealing loose asbestos fibres
	3	High damage or delamination of materials, sprays or insulation. Visible asbestos debris
Surface Treatment	0	Composite materials containing asbestos: reinforced plastics, resins, vinyl tiles
	1	Enclosed sprays and lagging, AIB (with exposed face painted or encapsulated), asbestos cement sheets
	2	Unsealed AIB, or encapsulated lagging and sprays
	3	Unsealed lagging and sprays
Asbestos Type	1	Chrysotile
	2	Amphibole asbestos excluding crocidolite
	3	Crocidolite

## 4.4 REFERENCES

Safety Health and Welfare at Work Act 2005

Safety Health and Welfare at Work (Exposure to Asbestos) Regulations 2006-2010

Safety Health and Welfare at Work (Construction) Regulations 2013

HSG264 The Survey Guide, HSE Books

HSG248 The Analysts Guide, HSE Books

HSG247 The Contractors Guide, HSE Books

## 5 SURVEY RESULTS



# Survey Results



**Customer**  
**Site**  
**Survey Date**  
**Valid Until**  
**Commissioned by**

CS Consulting Group  
 Edmund Rice Schools Trust  
 17/5/2019  
 17/5/2020  
 Owen Sullivan

**Type**  
**Report Number**  
**Surveyor**  
**Review Date**  
**Method**

Demolition  
 27081  
 Raymond Foran  
 17/5/2020  
 WI-02 & WI-03



### ACM REGISTER

**The following areas were found to contain ACM's**

<b>Risk Assessment</b>	338453	<b>Location</b>	RA:338453 Ground Floor Store under stairs Floor							
<b>Notes:</b>	Limited access due to the continued occupancy of the building.									
Type of Product	Quantity	Accessibility	Condition	Surface Treatment	Asbestos Type	Sample No.	Confirmation	MA	PA	Action
vinyl floor tile	--N\A--	--N\A--	Good condition	Composite materials containing asbestos	Chrysotile	RFB20190517004	Sample Taken	2	2	Priority 1 : Remove ACM's Prior to Refurbishment or Demolition.

#### Client and Survey Details

Client :CS Consulting Group  
Site :Edmund Rice Schools Trust  
Address :Edmund Rice Schools Trust

Date of Survey : 17 May 2019  
Review Survey : 17 May 2020  
Surveyor : Raymond Foran  
Method : WI-02 & WI-03  
Report No. : 27081

#### Location Details

Building/Area : Ground Floor  
Room/Section : Store under stairs  
Location : Floor  
Description : Grey floor tile & bitumen

Sample No. : RFB20190517004  
Confirmation : Sample Taken  
Access : Partial Access (Notes)  
Normal Use : Store

#### Material Risk Assessment 338453

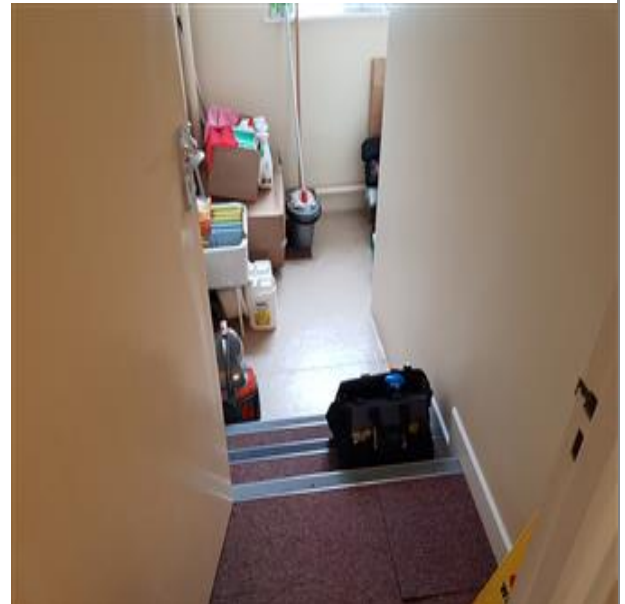
	Score	Risk Rating
Asbestos Type : Chrysotile	1	High Risk
Type Of Product : vinyl floor tile	1	Medium Risk
Condition : Good condition	0	Low Risk
Surface Treatment : Composite materials containing asbestos	0	Very Low Risk
<b>Material Assessment Score :</b>	<b>2</b>	<b>Very Low Risk</b>

#### Removal/Encapsulation Estimate

To be completed by the estimating contractor

	Costs	Notes
Labour		
Equipment		
Disposal		
Analytical		
<b>Totals</b>		

#### Photograph



#### Recommendations and Notes

Priority 1 : Remove ACM's Prior to Refurbishment or Demolition. Limited access due to the continued occupancy of the building.



**Customer**  
**Site**  
**Survey Date**  
**Valid Until**  
**Commissioned by**

CS Consulting Group  
 Edmund Rice Schools Trust  
 17/5/2019  
 17/5/2020  
 Owen Sullivan

**Type**  
**Report Number**  
**Surveyor**  
**Review Date**  
**Method**

Demolition  
 27081  
 Raymond Foran  
 17/5/2020  
 WI-02 & WI-03



### INCOMPLETE ACCESS REGISTER

**The following areas could not be accessed and therefore in accordance with HSG264 should be presumed to contain ACM's.**

<b>Risk Assessment</b>	338462	<b>Location</b>	RA:338462 Ground Floor Kitchen Store Floor						
<b>Notes:</b>	No intrusive access possible in the occupied building.								

Type of Product	Quantity	Accessibility	Condition	Surface Treatment	Asbestos Type	Sample No.	Confirmation	MA	PA	Action
--N\A--	--N\A--	--N\A--	--N\A--	--N\A--	Presumed ACM Present		Presumed	6	6	Priority 1 : Investigate prior to disturbing

<b>Risk Assessment</b>	338473	<b>Location</b>	RA:338473 Ground Floor Lobby 1 Electrical cabinet						
<b>Notes:</b>	Limited access due to the continued occupancy of the building.								

Type of Product	Quantity	Accessibility	Condition	Surface Treatment	Asbestos Type	Sample No.	Confirmation	MA	PA	Action
--N\A--	--N\A--	--N\A--	--N\A--	--N\A--	Presumed ACM Present		Presumed	6	6	Priority 1 : Investigate prior to disturbing

<b>Risk Assessment</b>	338459	<b>Location</b>	RA:338459 Ground Floor Kitchen Floor						
<b>Notes:</b>	No access beneath fixed floor coverings in the occupied building.								

Type of Product	Quantity	Accessibility	Condition	Surface Treatment	Asbestos Type	Sample No.	Confirmation	MA	PA	Action
--N\A--	--N\A--	--N\A--	--N\A--	--N\A--	Presumed ACM Present		Presumed	6	6	Priority 1 : Investigate prior to disturbing

<b>Risk Assessment</b>	338470	<b>Location</b>	RA:338470 Ground Floor Room 4 Store Floor						
<b>Notes:</b>	Limited access due to the continued occupancy of the building.								

Type of Product	Quantity	Accessibility	Condition	Surface Treatment	Asbestos Type	Sample No.	Confirmation	MA	PA	Action
--N\A--	--N\A--	--N\A--	--N\A--	--N\A--	Presumed ACM Present		Presumed	6	6	Priority 1 : Investigate prior to disturbing



**Customer**  
**Site**  
**Survey Date**  
**Valid Until**  
**Commissioned by**

CS Consulting Group  
 Edmund Rice Schools Trust  
 17/5/2019  
 17/5/2020  
 Owen Sullivan

**Type**  
**Report Number**  
**Surveyor**  
**Review Date**  
**Method**

Demolition  
 27081  
 Raymond Foran  
 17/5/2020  
 WI-02 & WI-03



### INCOMPLETE ACCESS REGISTER

**The following areas could not be accessed and therefore in accordance with HSG264 should be presumed to contain ACM's.**

<b>Risk Assessment</b>	338485	<b>Location</b>	RA:338485 Ground Floor Stairs Floor						
<b>Notes:</b>	No intrusive access possible in the occupied building.								

Type of Product	Quantity	Accessibility	Condition	Surface Treatment	Asbestos Type	Sample No.	Confirmation	MA	PA	Action
--N\A--	--N\A--	--N\A--	--N\A--	--N\A--	Presumed ACM Present		Presumed	6	6	Priority 1 : Investigate prior to disturbing

<b>Risk Assessment</b>	338488	<b>Location</b>	RA:338488 First Floor Ladies Toilet & Store Floor						
<b>Notes:</b>	No intrusive access possible in the occupied building.								

Type of Product	Quantity	Accessibility	Condition	Surface Treatment	Asbestos Type	Sample No.	Confirmation	MA	PA	Action
--N\A--	--N\A--	--N\A--	--N\A--	--N\A--	Presumed ACM Present		Presumed	6	6	Priority 1 : Investigate prior to disturbing

<b>Risk Assessment</b>	338501	<b>Location</b>	RA:338501 First Floor Hot Press Floor						
<b>Notes:</b>	No intrusive access possible in the occupied building.								

Type of Product	Quantity	Accessibility	Condition	Surface Treatment	Asbestos Type	Sample No.	Confirmation	MA	PA	Action
--N\A--	--N\A--	--N\A--	--N\A--	--N\A--	Presumed ACM Present		Presumed	6	6	Priority 1 : Investigate prior to disturbing

<b>Risk Assessment</b>	338491	<b>Location</b>	RA:338491 First Floor Corridor Floor						
<b>Notes:</b>	No intrusive access possible in the occupied building.								

Type of Product	Quantity	Accessibility	Condition	Surface Treatment	Asbestos Type	Sample No.	Confirmation	MA	PA	Action
--N\A--	--N\A--	--N\A--	--N\A--	--N\A--	Presumed ACM Present		Presumed	6	6	Priority 1 : Investigate prior to disturbing





**Customer Site**  
**Survey Date**  
**Valid Until**  
**Commissioned by**

CS Consulting Group  
 Edmund Rice Schools Trust  
 17/5/2019  
 17/5/2020  
 Owen Sullivan

**Type**  
**Report Number**  
**Surveyor**  
**Review Date**  
**Method**

Demolition  
 27081  
 Raymond Foran  
 17/5/2020  
 WI-02 & WI-03



### INCOMPLETE ACCESS REGISTER

**The following areas could not be accessed and therefore in accordance with HSG264 should be presumed to contain ACM's.**

<b>Risk Assessment</b>	338521	<b>Location</b>	RA:338521 Ground Floor Exterior Room All areas						
------------------------	--------	-----------------	--	--	--	--	--	--	--

Type of Product	Quantity	Accessibility	Condition	Surface Treatment	Asbestos Type	Sample No.	Confirmation	MA	PA	Action
--N\A--	--N\A--	--N\A--	--N\A--	--N\A--	Presumed ACM Present		Presumed	6	6	Priority 1 : Investigate prior to disturbing

<b>Risk Assessment</b>	338522	<b>Location</b>	RA:338522 All Floors All areas Boxing						
------------------------	--------	-----------------	---------------------------------------	--	--	--	--	--	--

<b>Notes:</b>	Limited access due to the continued occupancy of the building.									
---------------	--	--	--	--	--	--	--	--	--	--

Type of Product	Quantity	Accessibility	Condition	Surface Treatment	Asbestos Type	Sample No.	Confirmation	MA	PA	Action
--N\A--	--N\A--	--N\A--	--N\A--	--N\A--	Presumed ACM Present		Presumed	6	6	Priority 1 : Investigate prior to disturbing

<b>Risk Assessment</b>	338498	<b>Location</b>	RA:338498 First Floor Gents Toilet Floor						
------------------------	--------	-----------------	--	--	--	--	--	--	--

<b>Notes:</b>	No intrusive access possible in the occupied building.									
---------------	--	--	--	--	--	--	--	--	--	--

Type of Product	Quantity	Accessibility	Condition	Surface Treatment	Asbestos Type	Sample No.	Confirmation	MA	PA	Action
--N\A--	--N\A--	--N\A--	--N\A--	--N\A--	Presumed ACM Present		Presumed	6	6	Priority 1 : Investigate prior to disturbing

<b>Risk Assessment</b>	338525	<b>Location</b>	RA:338525 All Floors Exterior Window panels						
------------------------	--------	-----------------	---	--	--	--	--	--	--

<b>Notes:</b>	Limited access due to the continued occupancy of the building.									
---------------	--	--	--	--	--	--	--	--	--	--

Type of Product	Quantity	Accessibility	Condition	Surface Treatment	Asbestos Type	Sample No.	Confirmation	MA	PA	Action
--N\A--	--N\A--	--N\A--	--N\A--	--N\A--	Presumed ACM Present		Presumed	6	6	Priority 1 : Investigate prior to disturbing

Unit 2BEaT Centre, Stephenstown Industrial Estate, Balbriggan, Co. Dublin Tel: (01) 6905907 Fax: (01) 8020439 Email: info@ohss.ie Website: www.ohss.ie

#### Client and Survey Details

Client :CS Consulting Group  
Site :Edmund Rice Schools Trust  
Address :Edmund Rice Schools Trust

Date of Survey : 17 May 2019  
Review Survey : 17 May 2020  
Surveyor : Raymond Foran  
Method : WI-02 & WI-03  
Report No. : 27081

#### Location Details

Building/Area : Ground Floor  
Room/Section : Kitchen Store  
Location : Floor  
Description : Beneath fixed floor coverings

Sample No. :  
Confirmation : Presumed  
Access : No Access  
Normal Use : Store

#### Material Risk Assessment 338462

Asbestos Type : Presumed ACM Present  
Type Of Product : --N\A--  
Condition : --N\A--  
Surface Treatment : --N\A--

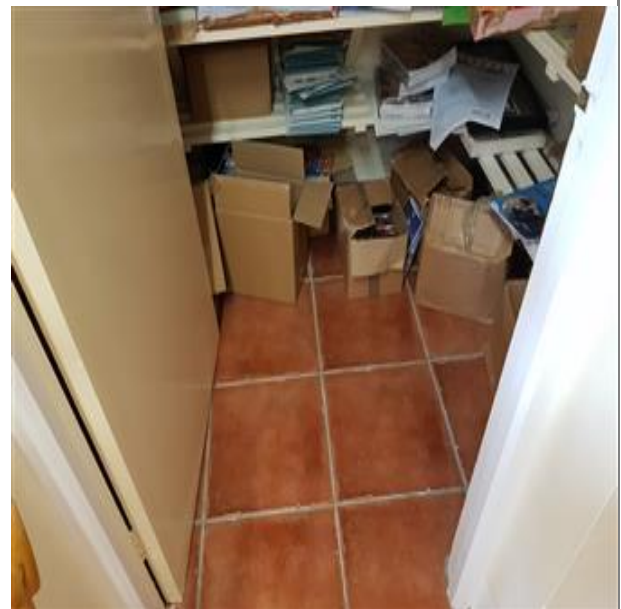
Score	Risk Rating
6	High Risk
0	Medium Risk
0	Low Risk
0	Very Low Risk
<b>Material Assessment Score : 6</b>	<b>Low Risk</b>

#### Removal/Encapsulation Estimate

To be completed by the estimating contractor

	Costs	Notes
Labour		
Equipment		
Disposal		
Analytical		
<b>Totals</b>		

#### Photograph



#### Recommendations and Notes

Priority 1 : Investigate prior to disturbing No intrusive access possible in the occupied building.

While every effort was taken to insure the accuracy of this report we do not accept responsibility for any omissions or areas of the building not addressed in the report. This report is intended to assist in reducing the possibility of accidents and ill health by bringing to the client's attention identified asbestos containing materials. It is not implied that all other hazards are under control at the time of inspections.

#### Client and Survey Details

Client :CS Consulting Group  
Site :Edmund Rice Schools Trust  
Address :Edmund Rice Schools Trust

Date of Survey : 17 May 2019  
Review Survey : 17 May 2020  
Surveyor : Raymond Foran  
Method : WI-02 & WI-03  
Report No. : 27081

#### Location Details

Building/Area : Ground Floor  
Room/Section : Lobby 1  
Location : Electrical cabinet  
Description :

Sample No. :  
Confirmation : Presumed  
Access : No Access  
Normal Use : Lobby

#### Material Risk Assessment 338473

Asbestos Type : Presumed ACM Present  
Type Of Product : --N\A--  
Condition : --N\A--  
Surface Treatment : --N\A--

Score	Risk Rating
6	High Risk
0	Medium Risk
0	Low Risk
0	Very Low Risk
Material Assessment Score : 6	Low Risk

#### Removal/Encapsulation Estimate

To be completed by the estimating contractor

	Costs	Notes
Labour		
Equipment		
Disposal		
Analytical		
Totals		

#### Photograph



#### Recommendations and Notes

Priority 1 : Investigate prior to disturbing Limited access due to the continued occupancy of the building.

#### Client and Survey Details

Client :CS Consulting Group  
Site :Edmund Rice Schools Trust  
Address :Edmund Rice Schools Trust

Date of Survey : 17 May 2019  
Review Survey : 17 May 2020  
Surveyor : Raymond Foran  
Method : WI-02 & WI-03  
Report No. : 27081

#### Location Details

Building/Area : Ground Floor  
Room/Section : Kitchen  
Location : Floor  
Description : Beneath fixed floor coverings

Sample No. :  
Confirmation : Presumed  
Access : No Access  
Normal Use : Kitchen

#### Material Risk Assessment 338459

Asbestos Type : Presumed ACM Present  
Type Of Product : --N\A--  
Condition : --N\A--  
Surface Treatment : --N\A--

Score

Risk Rating

6

High Risk

0

Medium Risk

0

Low Risk

0

Very Low Risk

Material Assessment Score :

6

Low Risk

#### Removal/Encapsulation Estimate

To be completed by the estimating contractor

	Costs	Notes
Labour		
Equipment		
Disposal		
Analytical		
Totals		

#### Photograph



#### Recommendations and Notes

Priority 1 : Investigate prior to disturbing No access beneath fixed floor coverings in the occupied building.

#### Client and Survey Details

Client :CS Consulting Group  
Site :Edmund Rice Schools Trust  
Address :Edmund Rice Schools Trust

Date of Survey : 17 May 2019  
Review Survey : 17 May 2020  
Surveyor : Raymond Foran  
Method : WI-02 & WI-03  
Report No. : 27081

#### Location Details

Building/Area : Ground Floor  
Room/Section : Room 4 Store  
Location : Floor  
Description : Beneath fixed floor coverings

Sample No. :  
Confirmation : Presumed  
Access : No Access  
Normal Use : Store

#### Material Risk Assessment 338470

Asbestos Type : Presumed ACM Present  
Type Of Product : --N\A--  
Condition : --N\A--  
Surface Treatment : --N\A--

Score

Risk Rating

6

High Risk

0

Medium Risk

0

Low Risk

0

Very Low Risk

Material Assessment Score :

6

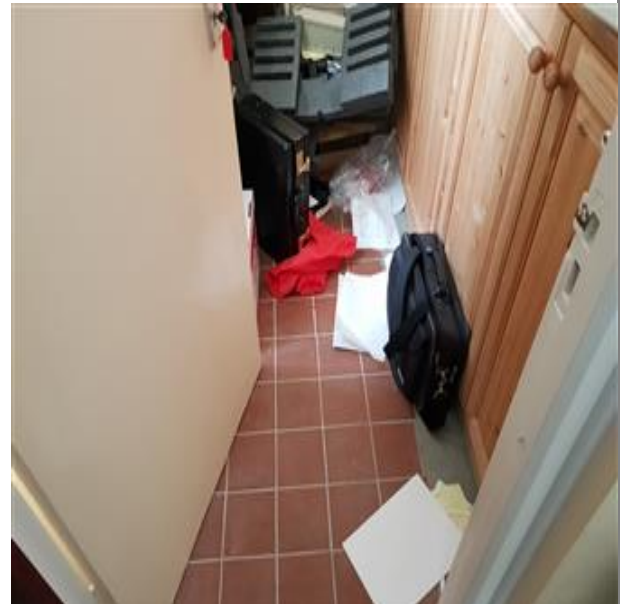
Low Risk

#### Removal/Encapsulation Estimate

To be completed by the estimating contractor

	Costs	Notes
Labour		
Equipment		
Disposal		
Analytical		
Totals		

#### Photograph



#### Recommendations and Notes

Priority 1 : Investigate prior to disturbing Limited access due to the continued occupancy of the building.

#### Client and Survey Details

Client :CS Consulting Group  
Site :Edmund Rice Schools Trust  
Address :Edmund Rice Schools Trust

Date of Survey : 17 May 2019  
Review Survey : 17 May 2020  
Surveyor : Raymond Foran  
Method : WI-02 & WI-03  
Report No. : 27081

#### Location Details

Building/Area : Ground Floor  
Room/Section : Stairs  
Location : Floor  
Description : Beneath fixed floor coverings

Sample No. :  
Confirmation : Presumed  
Access : No Access  
Normal Use : Stairs

#### Material Risk Assessment 338485

Asbestos Type : Presumed ACM Present  
Type Of Product : --N\A--  
Condition : --N\A--  
Surface Treatment : --N\A--

Score	Risk Rating
6	High Risk
0	Medium Risk
0	Low Risk
0	Very Low Risk
Material Assessment Score : 6	Low Risk

#### Removal/Encapsulation Estimate

To be completed by the estimating contractor

	Costs	Notes
Labour		
Equipment		
Disposal		
Analytical		
Totals		

#### Photograph



#### Recommendations and Notes

Priority 1 : Investigate prior to disturbing No intrusive access possible in the occupied building.



Unit 2BEaT Centre, Stephenstown Industrial Estate, Balbriggan, Co. Dublin Tel: (01) 6905907 Fax: (01) 8020439 Email: info@ohss.ie Website: www.ohss.ie

#### Client and Survey Details

Client :CS Consulting Group

Date of Survey : 17 May 2019

Site :Edmund Rice Schools Trust

Review Survey : 17 May 2020

Address :Edmund Rice Schools Trust

Surveyor : Raymond Foran

Method : WI-02 & WI-03

Report No. : 27081

#### Location Details

Building/Area : First Floor

Sample No. :

Room/Section : Ladies Toilet & Store

Confirmation : Presumed

Location : Floor

Access : No Access

Description : Beneath fixed floor coverings

Normal Use : Toilet & Store

#### Material Risk Assessment 338488

	Score	Risk Rating
Asbestos Type : Presumed ACM Present	6	High Risk
Type Of Product : --N\A--	0	Medium Risk
Condition : --N\A--	0	Low Risk
Surface Treatment : --N\A--	0	Very Low Risk
<b>Material Assessment Score :</b>	<b>6</b>	<b>Low Risk</b>

#### Removal/Encapsulation Estimate

To be completed by the estimating contractor

	Costs	Notes
Labour		
Equipment		
Disposal		
Analytical		
<b>Totals</b>		

#### Photograph



#### Recommendations and Notes

Priority 1 : Investigate prior to disturbing No intrusive access possible in the occupied building.

While every effort was taken to insure the accuracy of this report we do not accept responsibility for any omissions or areas of the building not addressed in the report.  
This report is intended to assist in reducing the possibility of accidents and ill health by bringing to the client's attention identified asbestos containing materials.  
It is not implied that all other hazards are under control at the time of inspections.

#### Client and Survey Details

Client :CS Consulting Group  
Site :Edmund Rice Schools Trust  
Address :Edmund Rice Schools Trust

Date of Survey : 17 May 2019  
Review Survey : 17 May 2020  
Surveyor : Raymond Foran  
Method : WI-02 & WI-03  
Report No. : 27081

#### Location Details

Building/Area : First Floor  
Room/Section : Hot Press  
Location : Floor  
Description : Beneath fixed floor coverings

Sample No. :  
Confirmation : Presumed  
Access : No Access  
Normal Use : Hot Press

#### Material Risk Assessment 338501

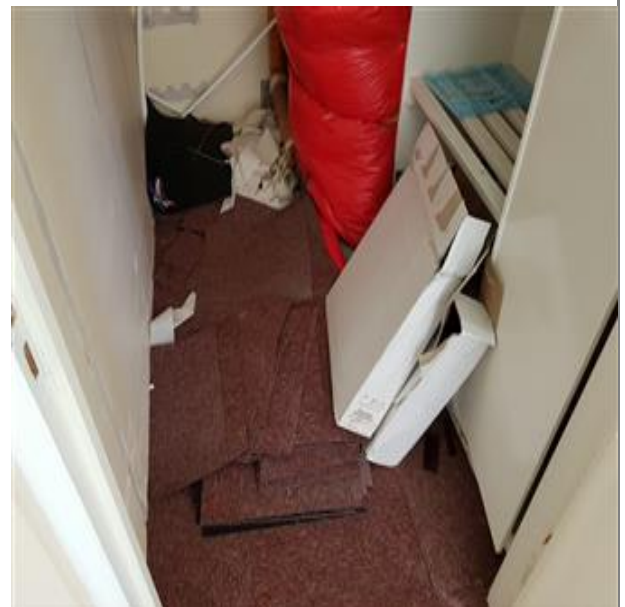
	Score	Risk Rating
Asbestos Type : Presumed ACM Present	6	High Risk
Type Of Product : --N\A--	0	Medium Risk
Condition : --N\A--	0	Low Risk
Surface Treatment : --N\A--	0	Very Low Risk
<b>Material Assessment Score :</b>	<b>6</b>	<b>Low Risk</b>

#### Removal/Encapsulation Estimate

To be completed by the estimating contractor

	Costs	Notes
Labour		
Equipment		
Disposal		
Analytical		
<b>Totals</b>		

#### Photograph



#### Recommendations and Notes

Priority 1 : Investigate prior to disturbing No intrusive access possible in the occupied building.



#### Client and Survey Details

Client :CS Consulting Group  
Site :Edmund Rice Schools Trust  
Address :Edmund Rice Schools Trust

Date of Survey : 17 May 2019  
Review Survey : 17 May 2020  
Surveyor : Raymond Foran  
Method : WI-02 & WI-03  
Report No. : 27081

#### Location Details

Building/Area : First Floor  
Room/Section : Corridor  
Location : Floor  
Description : Beneath fixed floor coverings

Sample No. :  
Confirmation : Presumed  
Access : No Access  
Normal Use : Corridor

#### Material Risk Assessment 338491

Asbestos Type : Presumed ACM Present  
Type Of Product : --N\A--  
Condition : --N\A--  
Surface Treatment : --N\A--

Score

Risk Rating

6

High Risk

0

Medium Risk

0

Low Risk

0

Very Low Risk

Material Assessment Score :

6

Low Risk

#### Removal/Encapsulation Estimate

To be completed by the estimating contractor

	Costs	Notes
Labour		
Equipment		
Disposal		
Analytical		
Totals		

#### Photograph



#### Recommendations and Notes

Priority 1 : Investigate prior to disturbing No intrusive access possible in the occupied building.

#### Client and Survey Details

Client :CS Consulting Group  
Site :Edmund Rice Schools Trust  
Address :Edmund Rice Schools Trust

Date of Survey : 17 May 2019  
Review Survey : 17 May 2020  
Surveyor : Raymond Foran  
Method : WI-02 & WI-03  
Report No. : 27081

#### Location Details

Building/Area : Ground Floor  
Room/Section : Exterior Room  
Location : All areas  
Description :

Sample No. :  
Confirmation : Presumed  
Access : No Access  
Normal Use : Room

#### Material Risk Assessment 338521

Asbestos Type : Presumed ACM Present  
Type Of Product : --N\A--  
Condition : --N\A--  
Surface Treatment : --N\A--

Score

Risk Rating

6

High Risk

0

Medium Risk

0

Low Risk

0

Very Low Risk

Material Assessment Score :

6

Low Risk

#### Removal/Encapsulation Estimate

To be completed by the estimating contractor

	Costs	Notes
Labour		
Equipment		
Disposal		
Analytical		
Totals		

#### Photograph



#### Recommendations and Notes

Priority 1 : Investigate prior to disturbing

#### Client and Survey Details

Client :CS Consulting Group  
Site :Edmund Rice Schools Trust  
Address :Edmund Rice Schools Trust

Date of Survey : 17 May 2019  
Review Survey : 17 May 2020  
Surveyor : Raymond Foran  
Method : WI-02 & WI-03  
Report No. : 27081

#### Location Details

Building/Area : All Floors  
Room/Section : All areas  
Location : Boxing  
Description : Services boxing

Sample No. :  
Confirmation : Presumed  
Access : No Access  
Normal Use : Office Building

#### Material Risk Assessment 338522

Asbestos Type : Presumed ACM Present  
Type Of Product : --N\A--  
Condition : --N\A--  
Surface Treatment : --N\A--

Score

Risk Rating

6

High Risk

0

Medium Risk

0

Low Risk

0

Very Low Risk

Material Assessment Score :

6

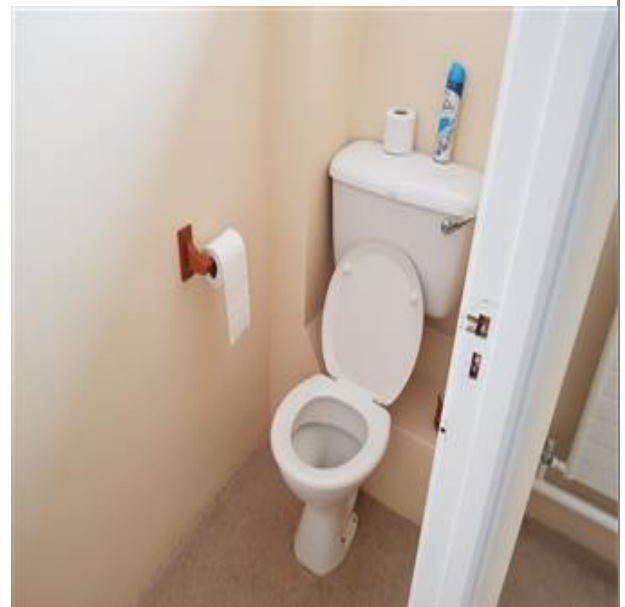
Low Risk

#### Removal/Encapsulation Estimate

To be completed by the estimating contractor

	Costs	Notes
Labour		
Equipment		
Disposal		
Analytical		
Totals		

#### Photograph



#### Recommendations and Notes

Priority 1 : Investigate prior to disturbing Limited access due to the continued occupancy of the building.

Unit 2BEaT Centre, Stephenstown Industrial Estate, Balbriggan, Co. Dublin Tel: (01) 6905907 Fax: (01) 8020439 Email: info@ohss.ie Website: www.ohss.ie

#### Client and Survey Details

Client :CS Consulting Group  
Site :Edmund Rice Schools Trust  
Address :Edmund Rice Schools Trust

Date of Survey : 17 May 2019  
Review Survey : 17 May 2020  
Surveyor : Raymond Foran  
Method : WI-02 & WI-03  
Report No. : 27081

#### Location Details

Building/Area : First Floor  
Room/Section : Gents Toilet  
Location : Floor  
Description : Beneath fixed floor coverings

Sample No. :  
Confirmation : Presumed  
Access : No Access  
Normal Use : Toilet

#### Material Risk Assessment 338498

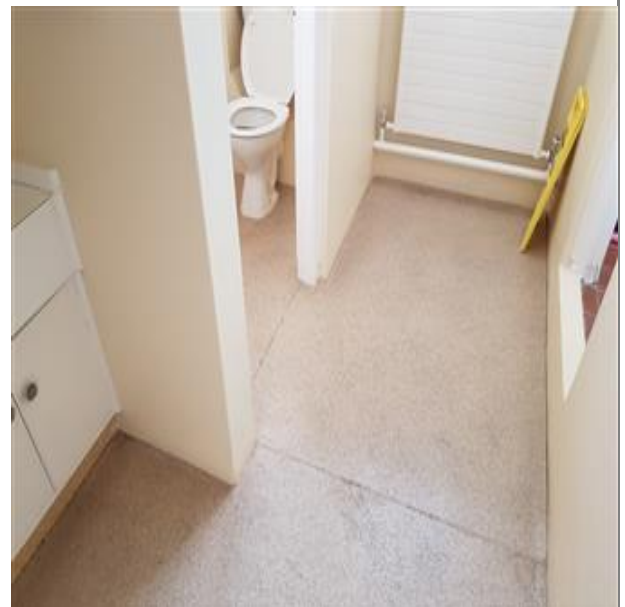
	Score	Risk Rating
Asbestos Type : Presumed ACM Present	6	High Risk
Type Of Product : --N\A--	0	Medium Risk
Condition : --N\A--	0	Low Risk
Surface Treatment : --N\A--	0	Very Low Risk
<b>Material Assessment Score :</b>	<b>6</b>	<b>Low Risk</b>

#### Removal/Encapsulation Estimate

To be completed by the estimating contractor

	Costs	Notes
Labour		
Equipment		
Disposal		
Analytical		
<b>Totals</b>		

#### Photograph



#### Recommendations and Notes

Priority 1 : Investigate prior to disturbing No intrusive access possible in the occupied building.

While every effort was taken to insure the accuracy of this report we do not accept responsibility for any omissions or areas of the building not addressed in the report.  
This report is intended to assist in reducing the possibility of accidents and ill health by bringing to the client's attention identified asbestos containing materials.  
It is not implied that all other hazards are under control at the time of inspections.

#### Client and Survey Details

Client :CS Consulting Group

Date of Survey : 17 May 2019

Site :Edmund Rice Schools Trust

Review Survey : 17 May 2020

Address :Edmund Rice Schools Trust

Surveyor : Raymond Foran

Method : WI-02 & WI-03

Report No. : 27081

#### Location Details

Building/Area : All Floors

Sample No. :

Room/Section : Exterior

Confirmation : Presumed

Location : Window panels

Access : No Access

Description :

Normal Use : Office Building

#### Material Risk Assessment 338525

	Score	Risk Rating
Asbestos Type : Presumed ACM Present	6	High Risk
Type Of Product : --N\A--	0	Medium Risk
Condition : --N\A--	0	Low Risk
Surface Treatment : --N\A--	0	Very Low Risk
<b>Material Assessment Score :</b>	<b>6</b>	<b>Low Risk</b>

#### Removal/Encapsulation Estimate

To be completed by the estimating contractor

	Costs	Notes
Labour		
Equipment		
Disposal		
Analytical		
<b>Totals</b>		

#### Photograph



#### Recommendations and Notes

Priority 1 : Investigate prior to disturbing Limited access due to the continued occupancy of the building.



**Customer**  
**Site**  
**Survey Date**  
**Valid Until**  
**Commissioned by**

CS Consulting Group  
 Edmund Rice Schools Trust  
 17/5/2019  
 17/5/2020  
 Owen Sullivan

**Type**  
**Report Number**  
**Surveyor**  
**Review Date**  
**Method**

Demolition  
 27081  
 Raymond Foran  
 17/5/2020  
 WI-02 & WI-03



### AREAS INSPECTED

#### Area(s) inspected during the survey where no ACM's were identified.

<b>Risk Assessment</b>	338523	<b>Location</b>	RA:338523 All Floors Exterior Roof
<b>Notes:</b>	No access to roof area.		
<b>Risk Assessment</b>	338454	<b>Location</b>	RA:338454 Ground Floor Store under stairs Walls & Ceiling
<b>Notes:</b>	Limited access due to the continued occupancy of the building.		
<b>Risk Assessment</b>	338455	<b>Location</b>	RA:338455 Ground Floor Room 2 Floor
<b>Notes:</b>	Limited access due to the continued occupancy of the building.		
<b>Risk Assessment</b>	338456	<b>Location</b>	RA:338456 Ground Floor Room 2 Walls & Ceiling
<b>Notes:</b>	Limited access due to the continued occupancy of the building.		
<b>Risk Assessment</b>	338457	<b>Location</b>	RA:338457 Ground Floor Store Walls & Ceiling
<b>Notes:</b>	Limited access due to the continued occupancy of the building.		
<b>Risk Assessment</b>	338458	<b>Location</b>	RA:338458 Ground Floor Store Floor
<b>Notes:</b>	Limited access due to the continued occupancy of the building.		
<b>Risk Assessment</b>	338449	<b>Location</b>	RA:338449 Ground Floor Room 1 Floor
<b>Notes:</b>	Limited access due to the continued occupancy of the building.		
<b>Risk Assessment</b>	338450	<b>Location</b>	RA:338450 Ground Floor Room 1 Walls & Ceiling
<b>Notes:</b>	Limited access due to the continued occupancy of the building.		
<b>Risk Assessment</b>	338451	<b>Location</b>	RA:338451 Ground Floor Room 1 Boiler Cupboard Walls & Ceiling
<b>Notes:</b>	Limited access due to the continued occupancy of the building.		
<b>Risk Assessment</b>	338452	<b>Location</b>	RA:338452 Ground Floor Room 1 Boiler Cupboard Floor
<b>Notes:</b>	Limited access due to the continued occupancy of the building.		
<b>Risk Assessment</b>	338463	<b>Location</b>	RA:338463 Ground Floor Lobby Floor
<b>Notes:</b>	No intrusive access possible in the occupied building.		



**Customer**  
**Site**  
**Survey Date**  
**Valid Until**  
**Commissioned by**

CS Consulting Group  
 Edmund Rice Schools Trust  
 17/5/2019  
 17/5/2020  
 Owen Sullivan

**Type**  
**Report Number**  
**Surveyor**  
**Review Date**  
**Method**

Demolition  
 27081  
 Raymond Foran  
 17/5/2020  
 WI-02 & WI-03



### AREAS INSPECTED

#### Area(s) inspected during the survey where no ACM's were identified.

<b>Risk Assessment</b>	338464	<b>Location</b>	RA:338464 Ground Floor Lobby Walls & Ceiling
<b>Notes:</b>	No intrusive access possible in the occupied building.		
<b>Risk Assessment</b>	338465	<b>Location</b>	RA:338465 Ground Floor Lobby Stores Walls & Ceiling
<b>Notes:</b>	No intrusive access possible in the occupied building.		
<b>Risk Assessment</b>	338466	<b>Location</b>	RA:338466 Ground Floor Lobby Stores Floor
<b>Notes:</b>	Limited access beneath the fixed floor coverings.		
<b>Risk Assessment</b>	338467	<b>Location</b>	RA:338467 Ground Floor Room 4 Floor
<b>Notes:</b>	No intrusive access possible in the occupied building.		
<b>Risk Assessment</b>	338468	<b>Location</b>	RA:338468 Ground Floor Room 4 Walls & Ceiling
<b>Notes:</b>	No intrusive access possible in the occupied building.		
<b>Risk Assessment</b>	338469	<b>Location</b>	RA:338469 Ground Floor Room 4 Store Walls & Ceiling
<b>Notes:</b>	No intrusive access possible in the occupied building.		
<b>Risk Assessment</b>	338489	<b>Location</b>	RA:338489 First Floor Ladies Toilet & Store Walls & Ceiling
<b>Notes:</b>	No intrusive access possible in the occupied building.		
<b>Risk Assessment</b>	338490	<b>Location</b>	RA:338490 First Floor Corridor Walls & Ceiling
<b>Notes:</b>	No intrusive access possible in the occupied building.		
<b>Risk Assessment</b>	338486	<b>Location</b>	RA:338486 Ground Floor Room 3 Walls & Ceiling
<b>Notes:</b>	No intrusive access possible in the occupied building.		
<b>Risk Assessment</b>	338487	<b>Location</b>	RA:338487 Ground Floor Room 3 Floor
<b>Notes:</b>	No intrusive access possible in the occupied building.		
<b>Risk Assessment</b>	338471	<b>Location</b>	RA:338471 Ground Floor Lobby 1 Walls & Ceiling
<b>Notes:</b>	No intrusive access possible in the occupied building.		





**Customer**  
**Site**  
**Survey Date**  
**Valid Until**  
**Commissioned by**

CS Consulting Group  
 Edmund Rice Schools Trust  
 17/5/2019  
 17/5/2020  
 Owen Sullivan

**Type**  
**Report Number**  
**Surveyor**  
**Review Date**  
**Method**

Demolition  
 27081  
 Raymond Foran  
 17/5/2020  
 WI-02 & WI-03



### AREAS INSPECTED

#### Area(s) inspected during the survey where no ACM's were identified.

<b>Risk Assessment</b>	338472	<b>Location</b>	RA:338472 Ground Floor Lobby 1 Floor
<b>Notes:</b>	Limited access due to the continued occupancy of the building.		
<b>Risk Assessment</b>	338460	<b>Location</b>	RA:338460 Ground Floor Kitchen Walls & Ceiling
<b>Notes:</b>	No intrusive access possible in the occupied building.		
<b>Risk Assessment</b>	338461	<b>Location</b>	RA:338461 Ground Floor Kitchen Store Walls & Ceiling
<b>Notes:</b>	No intrusive access possible in the occupied building.		
<b>Risk Assessment</b>	338474	<b>Location</b>	RA:338474 Ground Floor Meeting Room Floor, Walls & Ceiling
<b>Notes:</b>	No intrusive access possible in the occupied building.		
<b>Risk Assessment</b>	338475	<b>Location</b>	RA:338475 Ground Floor Room 5 Floor, Walls & Ceiling
<b>Notes:</b>	No intrusive access possible in the occupied building.		
<b>Risk Assessment</b>	338476	<b>Location</b>	RA:338476 Ground Floor Room 5 Bathroom Walls & Ceiling
<b>Notes:</b>	No intrusive access possible in the occupied building.		
<b>Risk Assessment</b>	338477	<b>Location</b>	RA:338477 Ground Floor Room 5 Bathroom Floor
<b>Notes:</b>	Limited access due to the continued occupancy of the building.		
<b>Risk Assessment</b>	338478	<b>Location</b>	RA:338478 Ground Floor Toilet Floor
<b>Notes:</b>	Limited access due to the continued occupancy of the building.		
<b>Risk Assessment</b>	338479	<b>Location</b>	RA:338479 Ground Floor Toilet Walls & Ceiling
<b>Notes:</b>	No intrusive access possible in the occupied building.		
<b>Risk Assessment</b>	338480	<b>Location</b>	RA:338480 Ground Floor Reception Walls & Ceiling
<b>Notes:</b>	No intrusive access possible in the occupied building.		
<b>Risk Assessment</b>	338481	<b>Location</b>	RA:338481 Ground Floor Reception Floor
<b>Notes:</b>	No intrusive access possible in the occupied building.		





**Customer**  
**Site**  
**Survey Date**  
**Valid Until**  
**Commissioned by**

CS Consulting Group  
 Edmund Rice Schools Trust  
 17/5/2019  
 17/5/2020  
 Owen Sullivan

**Type**  
**Report Number**  
**Surveyor**  
**Review Date**  
**Method**

Demolition  
 27081  
 Raymond Foran  
 17/5/2020  
 WI-02 & WI-03



### AREAS INSPECTED

**Area(s) inspected during the survey where no ACM's were identified.**

<b>Risk Assessment</b>	338482	<b>Location</b>	RA:338482 Ground Floor Corridor Floor
<b>Notes:</b>	No intrusive access possible in the occupied building.		
<b>Risk Assessment</b>	338483	<b>Location</b>	RA:338483 Ground Floor Corridor Walls & Ceiling
<b>Notes:</b>	No intrusive access possible in the occupied building.		
<b>Risk Assessment</b>	338484	<b>Location</b>	RA:338484 Ground Floor Stairs Walls & Ceiling
<b>Notes:</b>	No intrusive access possible in the occupied building.		
<b>Risk Assessment</b>	338499	<b>Location</b>	RA:338499 First Floor Gents Toilet Walls & Ceiling
<b>Notes:</b>	No intrusive access possible in the occupied building.		
<b>Risk Assessment</b>	338500	<b>Location</b>	RA:338500 First Floor Hot Press Walls & Ceiling
<b>Notes:</b>	No intrusive access possible in the occupied building.		
<b>Risk Assessment</b>	338524	<b>Location</b>	RA:338524 All Floors Porch Floor, Walls & Ceiling
<b>Risk Assessment</b>	338492	<b>Location</b>	RA:338492 First Floor Room 6 Floor
<b>Notes:</b>	No intrusive access possible in the occupied building.		
<b>Risk Assessment</b>	338493	<b>Location</b>	RA:338493 First Floor Room 6 Walls & Ceiling
<b>Notes:</b>	No intrusive access possible in the occupied building.		
<b>Risk Assessment</b>	338494	<b>Location</b>	RA:338494 First Floor Room 7 Walls & Ceiling
<b>Notes:</b>	No intrusive access possible in the occupied building.		
<b>Risk Assessment</b>	338495	<b>Location</b>	RA:338495 First Floor Room 7 Floor
<b>Notes:</b>	No intrusive access possible in the occupied building.		
<b>Risk Assessment</b>	338496	<b>Location</b>	RA:338496 First Floor Room 8 Walls & Ceiling
<b>Notes:</b>	No intrusive access possible in the occupied building.		



**Customer**  
**Site**  
**Survey Date**  
**Valid Until**  
**Commissioned by**

CS Consulting Group  
 Edmund Rice Schools Trust  
 17/5/2019  
 17/5/2020  
 Owen Sullivan

**Type**  
**Report Number**  
**Surveyor**  
**Review Date**  
**Method**

Demolition  
 27081  
 Raymond Foran  
 17/5/2020  
 WI-02 & WI-03



### AREAS INSPECTED

#### Area(s) inspected during the survey where no ACM's were identified.

<b>Risk Assessment</b>	338497	<b>Location</b>	RA:338497 First Floor Room 8 Floor
<b>Notes:</b>	No intrusive access possible in the occupied building.		
<b>Risk Assessment</b>	338502	<b>Location</b>	RA:338502 First Floor Hot Press Cylinder
<b>Risk Assessment</b>	338503	<b>Location</b>	RA:338503 First Floor Hot Press Pipework
<b>Risk Assessment</b>	338504	<b>Location</b>	RA:338504 First Floor Room 9 Floor
<b>Notes:</b>	No intrusive access possible in the occupied building.		
<b>Risk Assessment</b>	338505	<b>Location</b>	RA:338505 First Floor Room 9 Walls & Ceiling
<b>Notes:</b>	No intrusive access possible in the occupied building.		
<b>Risk Assessment</b>	338506	<b>Location</b>	RA:338506 First Floor Room 10 Floor
<b>Notes:</b>	No intrusive access possible in the occupied building.		
<b>Risk Assessment</b>	338507	<b>Location</b>	RA:338507 First Floor Room 10 Walls & Ceiling
<b>Notes:</b>	No intrusive access possible in the occupied building.		
<b>Risk Assessment</b>	338508	<b>Location</b>	RA:338508 First Floor Room 11 Walls & Ceiling
<b>Notes:</b>	No intrusive access possible in the occupied building.		
<b>Risk Assessment</b>	338509	<b>Location</b>	RA:338509 First Floor Room 11 Floor
<b>Notes:</b>	No intrusive access possible in the occupied building.		
<b>Risk Assessment</b>	338510	<b>Location</b>	RA:338510 First Floor Room 12 Floor
<b>Notes:</b>	No intrusive access possible in the occupied building.		
<b>Risk Assessment</b>	338511	<b>Location</b>	RA:338511 First Floor Room 12 Walls & Ceiling
<b>Notes:</b>	No intrusive access possible in the occupied building.		
<b>Risk Assessment</b>	338512	<b>Location</b>	RA:338512 First Floor Room 13 Walls & Ceiling
<b>Notes:</b>	No intrusive access possible in the occupied building.		



**Customer**  
**Site**  
**Survey Date**  
**Valid Until**  
**Commissioned by**

CS Consulting Group  
 Edmund Rice Schools Trust  
 17/5/2019  
 17/5/2020  
 Owen Sullivan

**Type**  
**Report Number**  
**Surveyor**  
**Review Date**  
**Method**

Demolition  
 27081  
 Raymond Foran  
 17/5/2020  
 WI-02 & WI-03



### AREAS INSPECTED

**Area(s) inspected during the survey where no ACM's were identified.**

<b>Risk Assessment</b>	338513	<b>Location</b>	RA:338513 First Floor Room 13 Floor
<b>Notes:</b>	No intrusive access possible in the occupied building.		
<b>Risk Assessment</b>	338514	<b>Location</b>	RA:338514 First Floor Room 14 Floor
<b>Notes:</b>	No intrusive access possible in the occupied building.		
<b>Risk Assessment</b>	338515	<b>Location</b>	RA:338515 First Floor Room 14 Walls & Ceiling
<b>Notes:</b>	No intrusive access possible in the occupied building.		
<b>Risk Assessment</b>	338516	<b>Location</b>	RA:338516 Attic Floor & Roof
<b>Notes:</b>	No access to roof felt.		
<b>Risk Assessment</b>	338517	<b>Location</b>	RA:338517 Attic Old water tanks
<b>Risk Assessment</b>	338518	<b>Location</b>	RA:338518 Attic New Water Tank
<b>Risk Assessment</b>	338519	<b>Location</b>	RA:338519 Attic Pipework
<b>Risk Assessment</b>	338520	<b>Location</b>	RA:338520 Garage Floor, Walls & Ceiling

### Client and Survey Details

Client : CS Consulting Group	Date of Survey : 17 May 2019
Site : Edmund Rice Schools Trust	Review Survey : 17 May 2020
Address : Edmund Rice Schools Trust	Surveyor : Raymond Foran
	Method : WI-02 & WI-03
	Report No. : 27081

### Location Details 338523 Presumed ACM Present

Building/Area : All Floors  
Room/Section : Exterior  
Location : Roof  
Description : Cement cloaker slates  
Sample No. :  
Confirmation : Presumed  
Access : Partial Access (Notes)  
Normal Use : Office Building  
Recommendations :  
No access to roof area.;



### Location Details 338454 No Asbestos Found

Building/Area : Ground Floor  
Room/Section : Store under stairs  
Location : Walls & Ceiling  
Description :  
Sample No. :  
Confirmation : --N\A--  
Access : Partial Access (Notes)  
Normal Use : Store  
Recommendations :  
Limited access due to the continued occupancy of the building.;



### Location Details 338455 No Asbestos Found

Building/Area : Ground Floor  
Room/Section : Room 2  
Location : Floor  
Description : Bitumen to parquet floor  
Sample No. : RFB20190517003  
Confirmation : Strongly presumed  
Access : Partial Access (Notes)  
Normal Use : Server Room  
Recommendations :  
Limited access due to the continued occupancy of the building.;



### Client and Survey Details

Client : CS Consulting Group	Date of Survey : 17 May 2019
Site : Edmund Rice Schools Trust	Review Survey : 17 May 2020
Address : Edmund Rice Schools Trust	Surveyor : Raymond Foran
	Method : WI-02 & WI-03
	Report No. : 27081

### Location Details 338456 No Asbestos Found

Building/Area : Ground Floor  
Room/Section : Room 2  
Location : Walls & Ceiling  
Description :  
Sample No. :  
Confirmation : --N\A--  
Access : Partial Access (Notes)  
Normal Use : Server Room  
Recommendations :

Limited access due to the continued occupancy of the building.;



### Location Details 338457 No Asbestos Found

Building/Area : Ground Floor  
Room/Section : Store  
Location : Walls & Ceiling  
Description :  
Sample No. :  
Confirmation : --N\A--  
Access : Partial Access (Notes)  
Normal Use : Store  
Recommendations :

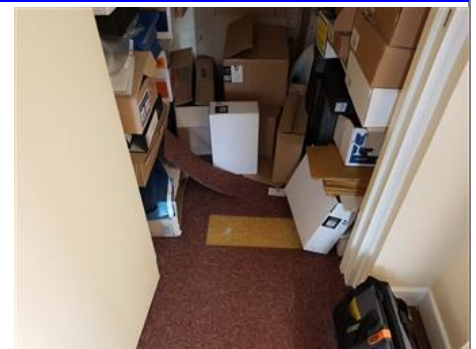
Limited access due to the continued occupancy of the building.;



### Location Details 338458 No Asbestos Found

Building/Area : Ground Floor  
Room/Section : Store  
Location : Floor  
Description : Lino  
Sample No. : RFB20190517005  
Confirmation : Sample Taken  
Access : Partial Access (Notes)  
Normal Use : Store  
Recommendations :

Limited access due to the continued occupancy of the building.;



### Client and Survey Details

Client : CS Consulting Group	Date of Survey : 17 May 2019
Site : Edmund Rice Schools Trust	Review Survey : 17 May 2020
Address : Edmund Rice Schools Trust	Surveyor : Raymond Foran
	Method : WI-02 & WI-03
	Report No. : 27081

### Location Details 338449 No Asbestos Found

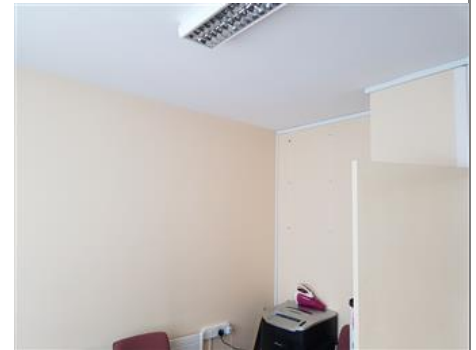
Building/Area : Ground Floor  
Room/Section : Room 1  
Location : Floor  
Description : Bitumen to parquet floor  
Sample No. : RFB20190517003  
Confirmation : Sample Taken  
Access : Partial Access (Notes)  
Normal Use : Waiting Area



Recommendations :  
Limited access due to the continued occupancy of the building.;

### Location Details 338450 No Asbestos Found

Building/Area : Ground Floor  
Room/Section : Room 1  
Location : Walls & Ceiling  
Description :  
Sample No. :  
Confirmation : --N\A--  
Access : Partial Access (Notes)  
Normal Use : Meeting Room



Recommendations :  
Limited access due to the continued occupancy of the building.;

### Location Details 338451 No Asbestos Found

Building/Area : Ground Floor  
Room/Section : Room 1 Boiler Cupboard  
Location : Walls & Ceiling  
Description :  
Sample No. :  
Confirmation : --N\A--  
Access : Partial Access (Notes)  
Normal Use : Cupboard



Recommendations :  
Limited access due to the continued occupancy of the building.;



### Client and Survey Details

Client : CS Consulting Group	Date of Survey : 17 May 2019
Site : Edmund Rice Schools Trust	Review Survey : 17 May 2020
Address : Edmund Rice Schools Trust	Surveyor : Raymond Foran
	Method : WI-02 & WI-03
	Report No. : 27081

### Location Details 338452 No Asbestos Found

Building/Area : Ground Floor  
Room/Section : Room 1 Boiler Cupboard  
Location : Floor  
Description : Bitumen to parquet floor  
Sample No. : RFB20190517003  
Confirmation : Strongly presumed  
Access : Partial Access (Notes)  
Normal Use : Cupboard



Recommendations :  
Limited access due to the continued occupancy of the building.;

### Location Details 338463 No Asbestos Found

Building/Area : Ground Floor  
Room/Section : Lobby  
Location : Floor  
Description : Lino  
Sample No. : RFB20190517005  
Confirmation : Strongly presumed  
Access : Partial Access (Notes)  
Normal Use : Lobby



Recommendations :  
No intrusive access possible in the occupied building.;

### Location Details 338464 No Asbestos Found

Building/Area : Ground Floor  
Room/Section : Lobby  
Location : Walls & Ceiling  
Description :  
Sample No. :  
Confirmation : --N\A--  
Access : Partial Access (Notes)  
Normal Use : Lobby



Recommendations :  
No intrusive access possible in the occupied building.;

### Client and Survey Details

Client : CS Consulting Group	Date of Survey : 17 May 2019
Site : Edmund Rice Schools Trust	Review Survey : 17 May 2020
Address : Edmund Rice Schools Trust	Surveyor : Raymond Foran
	Method : WI-02 & WI-03
	Report No. : 27081

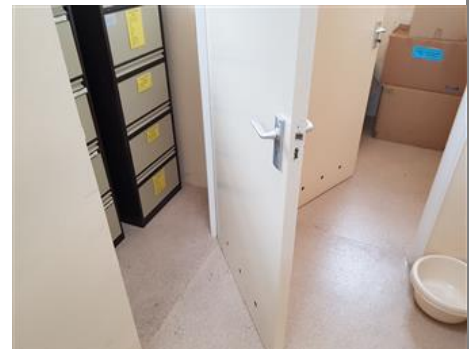
### Location Details 338465 No Asbestos Found

Building/Area : Ground Floor  
Room/Section : Lobby Stores  
Location : Walls & Ceiling  
Description :  
Sample No. :  
Confirmation : --N\A--  
Access : Partial Access (Notes)  
Normal Use : Store  
Recommendations :  
No intrusive access possible in the occupied building.;



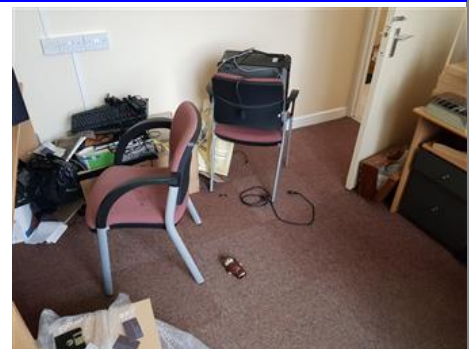
### Location Details 338466 No Asbestos Found

Building/Area : Ground Floor  
Room/Section : Lobby Stores  
Location : Floor  
Description : Lino  
Sample No. : RFB20190517005  
Confirmation : Strongly presumed  
Access : Partial Access (Notes)  
Normal Use : Stores  
Recommendations :  
Limited access beneath the fixed floor coverings.;



### Location Details 338467 No Asbestos Found

Building/Area : Ground Floor  
Room/Section : Room 4  
Location : Floor  
Description : Bitumen to parquet floor  
Sample No. : RFB20190517003  
Confirmation : Strongly presumed  
Access : Partial Access (Notes)  
Normal Use : Office  
Recommendations :  
No intrusive access possible in the occupied building.;





### Client and Survey Details

Client : CS Consulting Group	Date of Survey : 17 May 2019
Site : Edmund Rice Schools Trust	Review Survey : 17 May 2020
Address : Edmund Rice Schools Trust	Surveyor : Raymond Foran
	Method : WI-02 & WI-03
	Report No. : 27081

### Location Details 338468 No Asbestos Found

Building/Area : Ground Floor  
Room/Section : Room 4  
Location : Walls & Ceiling  
Description :  
Sample No. :  
Confirmation : --N\A--  
Access : Partial Access (Notes)  
Normal Use : Office  
Recommendations :  
No intrusive access possible in the occupied building.;



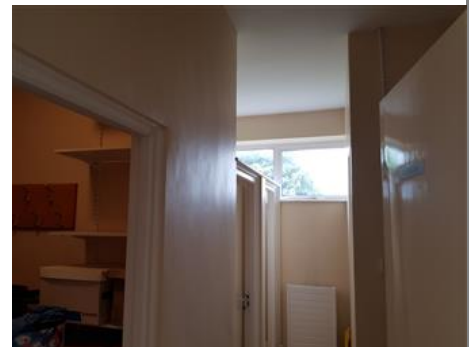
### Location Details 338469 No Asbestos Found

Building/Area : Ground Floor  
Room/Section : Room 4 Store  
Location : Walls & Ceiling  
Description :  
Sample No. :  
Confirmation : --N\A--  
Access : Partial Access (Notes)  
Normal Use : Store  
Recommendations :  
No intrusive access possible in the occupied building.;



### Location Details 338489 No Asbestos Found

Building/Area : First Floor  
Room/Section : Ladies Toilet & Store  
Location : Walls & Ceiling  
Description :  
Sample No. :  
Confirmation : --N\A--  
Access : Partial Access (Notes)  
Normal Use : Store  
Recommendations :  
No intrusive access possible in the occupied building.;



### Client and Survey Details

Client : CS Consulting Group	Date of Survey : 17 May 2019
Site : Edmund Rice Schools Trust	Review Survey : 17 May 2020
Address : Edmund Rice Schools Trust	Surveyor : Raymond Foran
	Method : WI-02 & WI-03
	Report No. : 27081

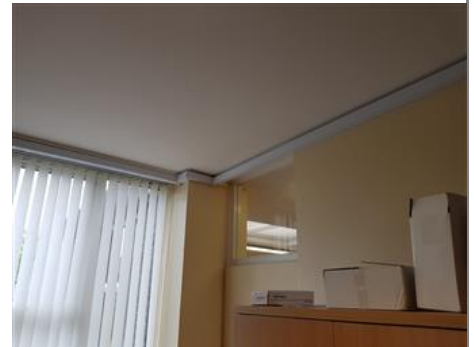
### Location Details 338490 No Asbestos Found

Building/Area : First Floor  
Room/Section : Corridor  
Location : Walls & Ceiling  
Description :  
Sample No. :  
Confirmation : --N\A--  
Access : Partial Access (Notes)  
Normal Use : Corridor  
Recommendations :  
No intrusive access possible in the occupied building.;



### Location Details 338486 No Asbestos Found

Building/Area : Ground Floor  
Room/Section : Room 3  
Location : Walls & Ceiling  
Description :  
Sample No. :  
Confirmation : --N\A--  
Access : Partial Access (Notes)  
Normal Use : Office  
Recommendations :  
No intrusive access possible in the occupied building.;



### Location Details 338487 No Asbestos Found

Building/Area : Ground Floor  
Room/Section : Room 3  
Location : Floor  
Description : Bitumen to parquet  
Sample No. : RFB20190517003  
Confirmation : Strongly presumed  
Access : Partial Access (Notes)  
Normal Use : Office  
Recommendations :  
No intrusive access possible in the occupied building.;



### Client and Survey Details

Client : CS Consulting Group	Date of Survey : 17 May 2019
Site : Edmund Rice Schools Trust	Review Survey : 17 May 2020
Address : Edmund Rice Schools Trust	Surveyor : Raymond Foran
	Method : WI-02 & WI-03
	Report No. : 27081

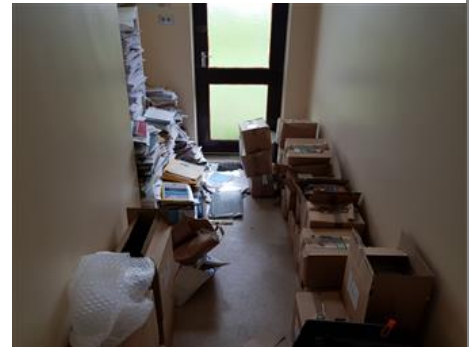
### Location Details 338471 No Asbestos Found

Building/Area : Ground Floor  
Room/Section : Lobby 1  
Location : Walls & Ceiling  
Description :  
Sample No. :  
Confirmation : --N\A--  
Access : Partial Access (Notes)  
Normal Use : Lobby  
Recommendations :  
No intrusive access possible in the occupied building.;



### Location Details 338472 No Asbestos Found

Building/Area : Ground Floor  
Room/Section : Lobby 1  
Location : Floor  
Description : Lino  
Sample No. : RFB20190517005  
Confirmation : Strongly presumed  
Access : Partial Access (Notes)  
Normal Use : Lobby  
Recommendations :  
Limited access due to the continued occupancy of the building.;



### Location Details 338460 No Asbestos Found

Building/Area : Ground Floor  
Room/Section : Kitchen  
Location : Walls & Ceiling  
Description :  
Sample No. :  
Confirmation : --N\A--  
Access : Partial Access (Notes)  
Normal Use : Kitchen  
Recommendations :  
No intrusive access possible in the occupied building.;



### Client and Survey Details

Client : CS Consulting Group	Date of Survey : 17 May 2019
Site : Edmund Rice Schools Trust	Review Survey : 17 May 2020
Address : Edmund Rice Schools Trust	Surveyor : Raymond Foran
	Method : WI-02 & WI-03
	Report No. : 27081

### Location Details 338461 No Asbestos Found

Building/Area : Ground Floor  
Room/Section : Kitchen Store  
Location : Walls & Ceiling  
Description :  
Sample No. :  
Confirmation : --N\A--  
Access : Partial Access (Notes)  
Normal Use : Store  
Recommendations :  
No intrusive access possible in the occupied building.;



### Location Details 338474 No Asbestos Found

Building/Area : Ground Floor  
Room/Section : Meeting Room  
Location : Floor, Walls & Ceiling  
Description :  
Sample No. :  
Confirmation : --N\A--  
Access : Partial Access (Notes)  
Normal Use : Meeting Room  
Recommendations :  
No intrusive access possible in the occupied building.;



### Location Details 338475 No Asbestos Found

Building/Area : Ground Floor  
Room/Section : Room 5  
Location : Floor, Walls & Ceiling  
Description :  
Sample No. :  
Confirmation : --N\A--  
Access : Partial Access (Notes)  
Normal Use : Office  
Recommendations :  
No intrusive access possible in the occupied building.;





### Client and Survey Details

Client : CS Consulting Group	Date of Survey : 17 May 2019
Site : Edmund Rice Schools Trust	Review Survey : 17 May 2020
Address : Edmund Rice Schools Trust	Surveyor : Raymond Foran
	Method : WI-02 & WI-03
	Report No. : 27081

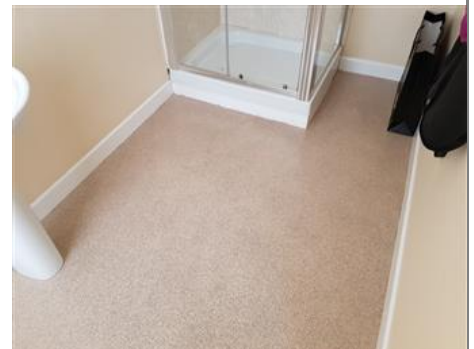
### Location Details 338476 No Asbestos Found

Building/Area : Ground Floor  
Room/Section : Room 5 Bathroom  
Location : Walls & Ceiling  
Description :  
Sample No. :  
Confirmation : --N\A--  
Access : Partial Access (Notes)  
Normal Use : Bathroom  
Recommendations :  
No intrusive access possible in the occupied building.;



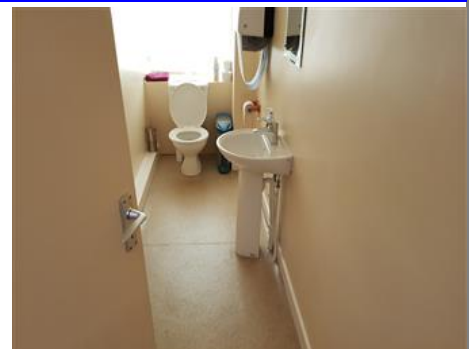
### Location Details 338477 No Asbestos Found

Building/Area : Ground Floor  
Room/Section : Room 5 Bathroom  
Location : Floor  
Description : Lino  
Sample No. : RFB20190517005  
Confirmation : Strongly presumed  
Access : Partial Access (Notes)  
Normal Use : Bathroom  
Recommendations :  
Limited access due to the continued occupancy of the building.;



### Location Details 338478 No Asbestos Found

Building/Area : Ground Floor  
Room/Section : Toilet  
Location : Floor  
Description : Lino  
Sample No. : RFB20190517005  
Confirmation : Strongly presumed  
Access : Partial Access (Notes)  
Normal Use : Toilet  
Recommendations :  
Limited access due to the continued occupancy of the building.;



### Client and Survey Details

Client : CS Consulting Group	Date of Survey : 17 May 2019
Site : Edmund Rice Schools Trust	Review Survey : 17 May 2020
Address : Edmund Rice Schools Trust	Surveyor : Raymond Foran
	Method : WI-02 & WI-03
	Report No. : 27081

### Location Details 338479 No Asbestos Found

Building/Area : Ground Floor  
Room/Section : Toilet  
Location : Walls & Ceiling  
Description :  
Sample No. :  
Confirmation : --N\A--  
Access : Partial Access (Notes)  
Normal Use : Toilet  
Recommendations :  
No intrusive access possible in the occupied building.;



### Location Details 338480 No Asbestos Found

Building/Area : Ground Floor  
Room/Section : Reception  
Location : Walls & Ceiling  
Description :  
Sample No. :  
Confirmation : --N\A--  
Access : Partial Access (Notes)  
Normal Use : Reception  
Recommendations :  
No intrusive access possible in the occupied building.;



### Location Details 338481 No Asbestos Found

Building/Area : Ground Floor  
Room/Section : Reception  
Location : Floor  
Description : Bitumen to parquet  
Sample No. : RFB20190517003  
Confirmation : Strongly presumed  
Access : Partial Access (Notes)  
Normal Use : Reception  
Recommendations :  
No intrusive access possible in the occupied building.;



### Client and Survey Details

Client : CS Consulting Group	Date of Survey : 17 May 2019
Site : Edmund Rice Schools Trust	Review Survey : 17 May 2020
Address : Edmund Rice Schools Trust	Surveyor : Raymond Foran
	Method : WI-02 & WI-03
	Report No. : 27081

### Location Details 338482 No Asbestos Found

Building/Area : Ground Floor  
Room/Section : Corridor  
Location : Floor  
Description : Bitumen to parquet  
Sample No. : RFB20190517003  
Confirmation : Strongly presumed  
Access : Partial Access (Notes)  
Normal Use : Corridor  
Recommendations :  
No intrusive access possible in the occupied building.;



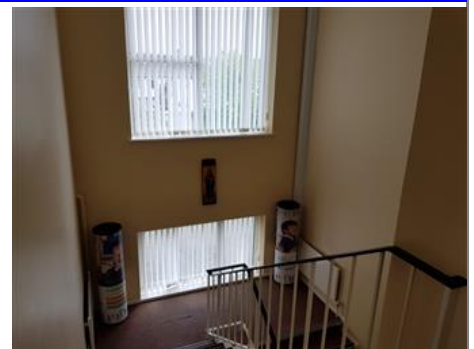
### Location Details 338483 No Asbestos Found

Building/Area : Ground Floor  
Room/Section : Corridor  
Location : Walls & Ceiling  
Description :  
Sample No. :  
Confirmation : --N\A--  
Access : Partial Access (Notes)  
Normal Use : Corridor  
Recommendations :  
No intrusive access possible in the occupied building.;



### Location Details 338484 No Asbestos Found

Building/Area : Ground Floor  
Room/Section : Stairs  
Location : Walls & Ceiling  
Description :  
Sample No. :  
Confirmation : --N\A--  
Access : Partial Access (Notes)  
Normal Use : Stairs  
Recommendations :  
No intrusive access possible in the occupied building.;



**Client and Survey Details**

Client : CS Consulting Group	Date of Survey : 17 May 2019
Site : Edmund Rice Schools Trust	Review Survey : 17 May 2020
Address : Edmund Rice Schools Trust	Surveyor : Raymond Foran
	Method : WI-02 & WI-03
	Report No. : 27081

**Location Details 338499 No Asbestos Found**

Building/Area : First Floor  
Room/Section : Gents Toilet  
Location : Walls & Ceiling  
Description :  
Sample No. :  
Confirmation : --N\A--  
Access : Partial Access (Notes)  
Normal Use : Toilet  
Recommendations :  
No intrusive access possible in the occupied building.;



**Location Details 338500 No Asbestos Found**

Building/Area : First Floor  
Room/Section : Hot Press  
Location : Walls & Ceiling  
Description :  
Sample No. :  
Confirmation : --N\A--  
Access : Partial Access (Notes)  
Normal Use : Hot Press  
Recommendations :  
No intrusive access possible in the occupied building.;



**Location Details 338524 No Asbestos Found**

Building/Area : All Floors  
Room/Section : Porch  
Location : Floor, Walls & Ceiling  
Description :  
Sample No. :  
Confirmation : --N\A--  
Access : Partial Access (Notes)  
Normal Use : Porch  
Recommendations :  
;





### Client and Survey Details

Client : CS Consulting Group	Date of Survey : 17 May 2019
Site : Edmund Rice Schools Trust	Review Survey : 17 May 2020
Address : Edmund Rice Schools Trust	Surveyor : Raymond Foran
	Method : WI-02 & WI-03
	Report No. : 27081

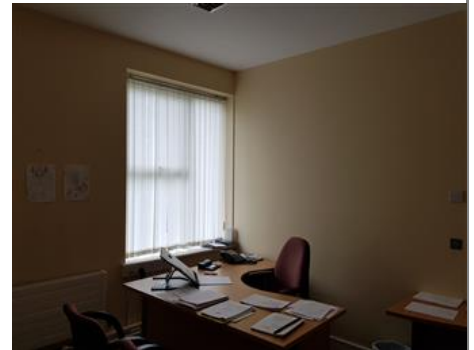
### Location Details 338492 No Asbestos Found

Building/Area : First Floor  
Room/Section : Room 6  
Location : Floor  
Description : Bitumen to parquet  
Sample No. : RFB20190517003  
Confirmation : Strongly presumed  
Access : Partial Access (Notes)  
Normal Use : Office  
Recommendations :  
No intrusive access possible in the occupied building.;



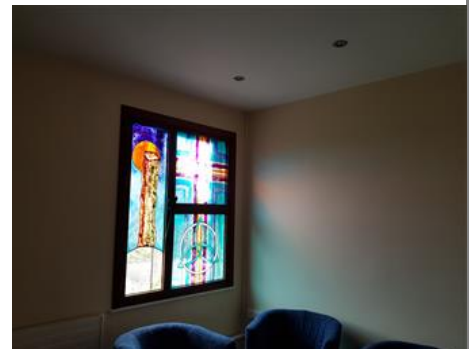
### Location Details 338493 No Asbestos Found

Building/Area : First Floor  
Room/Section : Room 6  
Location : Walls & Ceiling  
Description :  
Sample No. :  
Confirmation : --N\A--  
Access : Partial Access (Notes)  
Normal Use : Office  
Recommendations :  
No intrusive access possible in the occupied building.;



### Location Details 338494 No Asbestos Found

Building/Area : First Floor  
Room/Section : Room 7  
Location : Walls & Ceiling  
Description :  
Sample No. :  
Confirmation : --N\A--  
Access : Partial Access (Notes)  
Normal Use : Oratory  
Recommendations :  
No intrusive access possible in the occupied building.;



### Client and Survey Details

Client : CS Consulting Group	Date of Survey : 17 May 2019
Site : Edmund Rice Schools Trust	Review Survey : 17 May 2020
Address : Edmund Rice Schools Trust	Surveyor : Raymond Foran
	Method : WI-02 & WI-03
	Report No. : 27081

### Location Details 338495 No Asbestos Found

Building/Area : First Floor  
Room/Section : Room 7  
Location : Floor  
Description : Bitumen to parquet  
Sample No. : RFB20190517003  
Confirmation : Strongly presumed  
Access : Partial Access (Notes)  
Normal Use : Oratory



Recommendations :  
No intrusive access possible in the occupied building.;

### Location Details 338496 No Asbestos Found

Building/Area : First Floor  
Room/Section : Room 8  
Location : Walls & Ceiling  
Description :  
Sample No. :  
Confirmation : --N\A--  
Access : Partial Access (Notes)  
Normal Use : Office



Recommendations :  
No intrusive access possible in the occupied building.;

### Location Details 338497 No Asbestos Found

Building/Area : First Floor  
Room/Section : Room 8  
Location : Floor  
Description : Bitumen to parquet  
Sample No. : RFB20190517003  
Confirmation : Strongly presumed  
Access : Partial Access (Notes)  
Normal Use : Office



Recommendations :  
No intrusive access possible in the occupied building.;

**Client and Survey Details**

Client : CS Consulting Group	Date of Survey : 17 May 2019
Site : Edmund Rice Schools Trust	Review Survey : 17 May 2020
Address : Edmund Rice Schools Trust	Surveyor : Raymond Foran
	Method : WI-02 & WI-03
	Report No. : 27081

**Location Details 338502 No Asbestos Found**

Building/Area : First Floor  
Room/Section : Hot Press  
Location : Cylinder  
Description : Insulation  
Sample No. :  
Confirmation : --N\A--  
Access : Full Access  
Normal Use : Hot Press  
Recommendations :



**Location Details 338503 No Asbestos Found**

Building/Area : First Floor  
Room/Section : Hot Press  
Location : Pipework  
Description : Insulation  
Sample No. :  
Confirmation : --N\A--  
Access : Full Access  
Normal Use : Hot Press  
Recommendations :



**Location Details 338504 No Asbestos Found**

Building/Area : First Floor  
Room/Section : Room 9  
Location : Floor  
Description : Bitumen to parquet  
Sample No. : RFB20190517003  
Confirmation : Strongly presumed  
Access : Partial Access (Notes)  
Normal Use : Office  
Recommendations :  
No intrusive access possible in the occupied building.;



### Client and Survey Details

Client : CS Consulting Group	Date of Survey : 17 May 2019
Site : Edmund Rice Schools Trust	Review Survey : 17 May 2020
Address : Edmund Rice Schools Trust	Surveyor : Raymond Foran
	Method : WI-02 & WI-03
	Report No. : 27081

### Location Details 338505 No Asbestos Found

Building/Area : First Floor  
Room/Section : Room 9  
Location : Walls & Ceiling  
Description :  
Sample No. :  
Confirmation : --N\A--  
Access : Partial Access (Notes)  
Normal Use : Office  
Recommendations :  
No intrusive access possible in the occupied building.;



### Location Details 338506 No Asbestos Found

Building/Area : First Floor  
Room/Section : Room 10  
Location : Floor  
Description : Bitumen to parquet  
Sample No. : RFB20190517003  
Confirmation : Strongly presumed  
Access : Partial Access (Notes)  
Normal Use : Office  
Recommendations :  
No intrusive access possible in the occupied building.;



### Location Details 338507 No Asbestos Found

Building/Area : First Floor  
Room/Section : Room 10  
Location : Walls & Ceiling  
Description :  
Sample No. :  
Confirmation : --N\A--  
Access : Partial Access (Notes)  
Normal Use : Office  
Recommendations :  
No intrusive access possible in the occupied building.;





### Client and Survey Details

Client : CS Consulting Group	Date of Survey : 17 May 2019
Site : Edmund Rice Schools Trust	Review Survey : 17 May 2020
Address : Edmund Rice Schools Trust	Surveyor : Raymond Foran
	Method : WI-02 & WI-03
	Report No. : 27081

### Location Details 338508 No Asbestos Found

Building/Area : First Floor  
Room/Section : Room 11  
Location : Walls & Ceiling  
Description :  
Sample No. :  
Confirmation : --N\A--  
Access : Partial Access (Notes)  
Normal Use : Office  
Recommendations :  
No intrusive access possible in the occupied building.;



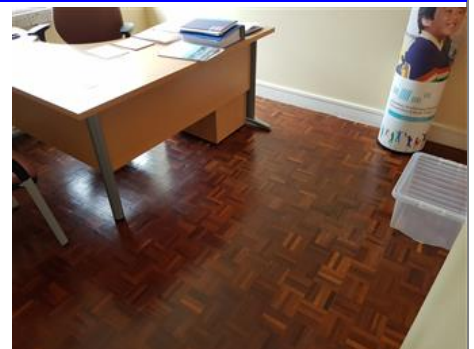
### Location Details 338509 No Asbestos Found

Building/Area : First Floor  
Room/Section : Room 11  
Location : Floor  
Description : Bitumen to parquet  
Sample No. : RFB20190517003  
Confirmation : Strongly presumed  
Access : Partial Access (Notes)  
Normal Use : Office  
Recommendations :  
No intrusive access possible in the occupied building.;



### Location Details 338510 No Asbestos Found

Building/Area : First Floor  
Room/Section : Room 12  
Location : Floor  
Description : Bitumen to parquet  
Sample No. : RFB20190517003  
Confirmation : Strongly presumed  
Access : Partial Access (Notes)  
Normal Use : Office  
Recommendations :  
No intrusive access possible in the occupied building.;



### Client and Survey Details

Client : CS Consulting Group	Date of Survey : 17 May 2019
Site : Edmund Rice Schools Trust	Review Survey : 17 May 2020
Address : Edmund Rice Schools Trust	Surveyor : Raymond Foran
	Method : WI-02 & WI-03
	Report No. : 27081

### Location Details 338511 No Asbestos Found

Building/Area : First Floor  
Room/Section : Room 12  
Location : Walls & Ceiling  
Description :  
Sample No. :  
Confirmation : --N\A--  
Access : Partial Access (Notes)  
Normal Use : Office  
Recommendations :  
No intrusive access possible in the occupied building.;



### Location Details 338512 No Asbestos Found

Building/Area : First Floor  
Room/Section : Room 13  
Location : Walls & Ceiling  
Description :  
Sample No. :  
Confirmation : --N\A--  
Access : Partial Access (Notes)  
Normal Use : Office  
Recommendations :  
No intrusive access possible in the occupied building.;



### Location Details 338513 No Asbestos Found

Building/Area : First Floor  
Room/Section : Room 13  
Location : Floor  
Description : Bitumen to parquet  
Sample No. : RFB20190517003  
Confirmation : Strongly presumed  
Access : Partial Access (Notes)  
Normal Use : Office  
Recommendations :  
No intrusive access possible in the occupied building.;



### Client and Survey Details

Client : CS Consulting Group	Date of Survey : 17 May 2019
Site : Edmund Rice Schools Trust	Review Survey : 17 May 2020
Address : Edmund Rice Schools Trust	Surveyor : Raymond Foran
	Method : WI-02 & WI-03
	Report No. : 27081

### Location Details 338514 No Asbestos Found

Building/Area : First Floor  
Room/Section : Room 14  
Location : Floor  
Description : Bitumen to parquet  
Sample No. : RFB20190517003  
Confirmation : Strongly presumed  
Access : Partial Access (Notes)  
Normal Use : Office  
Recommendations :  
No intrusive access possible in the occupied building.;



### Location Details 338515 No Asbestos Found

Building/Area : First Floor  
Room/Section : Room 14  
Location : Walls & Ceiling  
Description :  
Sample No. :  
Confirmation : --N\A--  
Access : Partial Access (Notes)  
Normal Use : Office  
Recommendations :  
No intrusive access possible in the occupied building.;



### Location Details 338516 No Asbestos Found

Building/Area :  
Room/Section : Attic  
Location : Floor & Roof  
Description :  
Sample No. :  
Confirmation : --N\A--  
Access : Partial Access (Notes)  
Normal Use : Attic  
Recommendations :  
No access to roof felt.;



### Client and Survey Details

Client : CS Consulting Group	Date of Survey : 17 May 2019
Site : Edmund Rice Schools Trust	Review Survey : 17 May 2020
Address : Edmund Rice Schools Trust	Surveyor : Raymond Foran
	Method : WI-02 & WI-03
	Report No. : 27081

### Location Details 338517 No Asbestos Found

Building/Area :  
Room/Section : Attic  
Location : Old water tanks  
Description : Metal construction  
Sample No. :  
Confirmation : --N\A--  
Access : Full Access  
Normal Use : Attic  
Recommendations :  
;



### Location Details 338518 No Asbestos Found

Building/Area :  
Room/Section : Attic  
Location : New Water Tank  
Description : Modern construction  
Sample No. :  
Confirmation : --N\A--  
Access : Full Access  
Normal Use : Attic  
Recommendations :  
;



### Location Details 338519 No Asbestos Found

Building/Area :  
Room/Section : Attic  
Location : Pipework  
Description : Insulation  
Sample No. : RFB20190517006  
Confirmation : Sample Taken  
Access : Full Access  
Normal Use : Attic  
Recommendations :  
;





Materials Risk Assessment  
DEMOLITION Survey  
in accordance with HSG264

Unit 2BEaT Centre, Stephenstown Industrial Estate, Balbriggan, Co. Dublin Tel: (01) 6905907 Fax: (01) 8020439 Email: info@ohss.ie Website: www.ohss.ie

**Client and Survey Details**

Client : CS Consulting Group	Date of Survey : 17 May 2019
Site : Edmund Rice Schools Trust	Review Survey : 17 May 2020
Address : Edmund Rice Schools Trust	Surveyor : Raymond Foran
	Method : WI-02 & WI-03
	Report No. : 27081

**Location Details 338520 No Asbestos Found**

Building/Area :  
Room/Section : Garage  
Location : Floor, Walls & Ceiling  
Description :  
Sample No. :  
Confirmation : --N/A--  
Access : Full Access  
Normal Use : Garage  
Recommendations :  
;



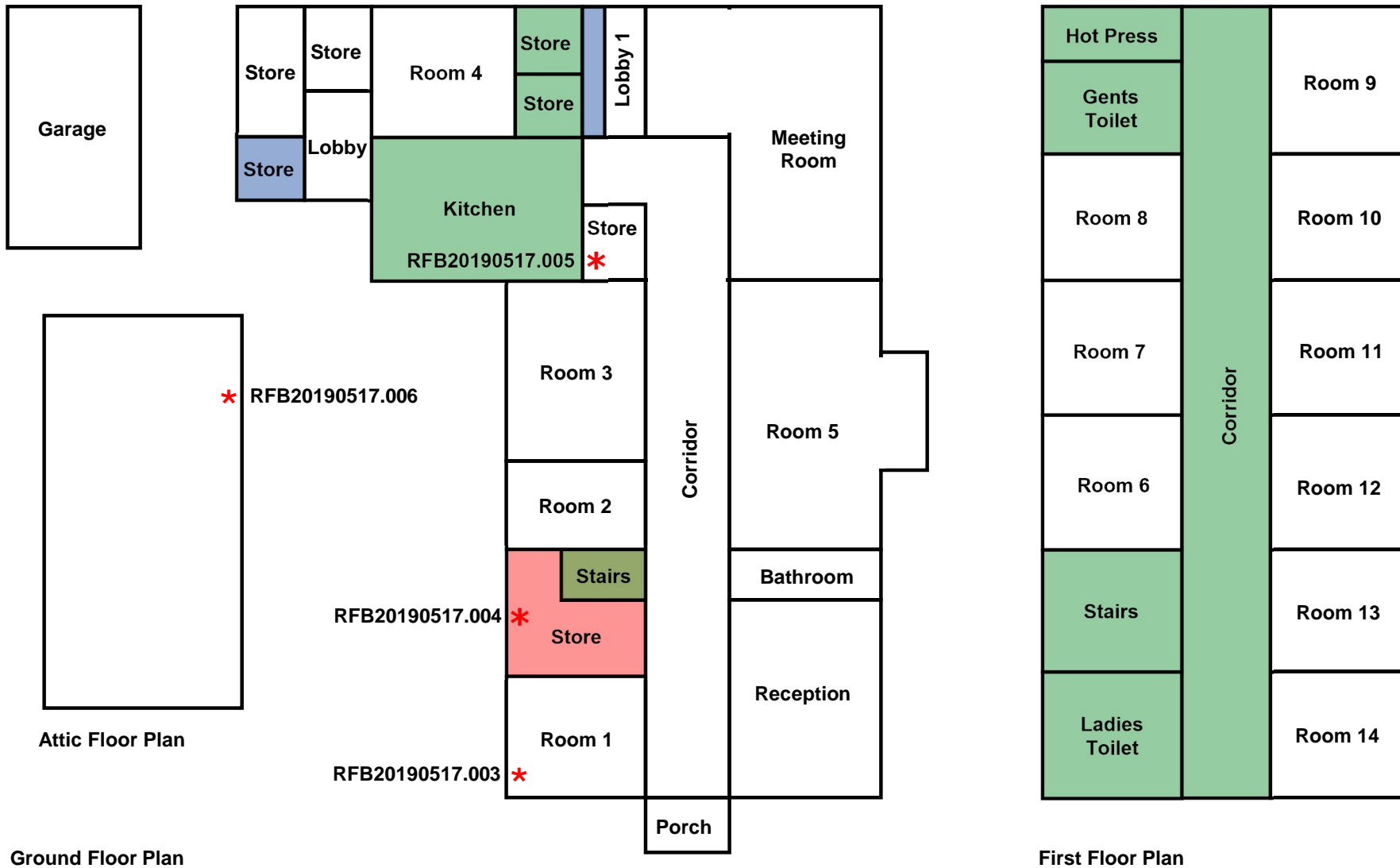






# Sample Analysis





**Drawings**



Drawing Legend		Drawing Revisions			Date	Scale	Project Number	<b>Asbestos Demolition Survey</b> <b>Edmund Rice Schools Trust</b> <b>Meadow Vale</b> <b>Clonkeen Road</b> <b>Blackrock</b>	 <small>QMF 139 Rev 1</small>
Contains Asbestos		Not Accessed Presumed To Contain Asbestos		Rev #	Revision Description	Date	27081		
Sample Point Location	*	No Access Under Fixed Floor Coverings Investigate Prior To Disturbance					Drawn By		
							Raymond Foran		
							This drawing is for illustration purposes only		
							1 of 1		